

All dimensions in millimetres unless otherwise stated.  
© This drawing is copyright of LAM Associates UK Ltd and must not be copied or reproduced without prior written approval of LAM Associates UK Ltd.  
Cloud Denotes in Abeyance - TBC

- NOTES
1. THE FIRE ALARM SYSTEM WORKS SHALL BE COMPLETED IN STRICT ACCORDANCE WITH BS:5839 2017.
  2. EMERGENCY LIGHTING SYSTEMS SHALL COMPLY WITH BS 5266 2016.

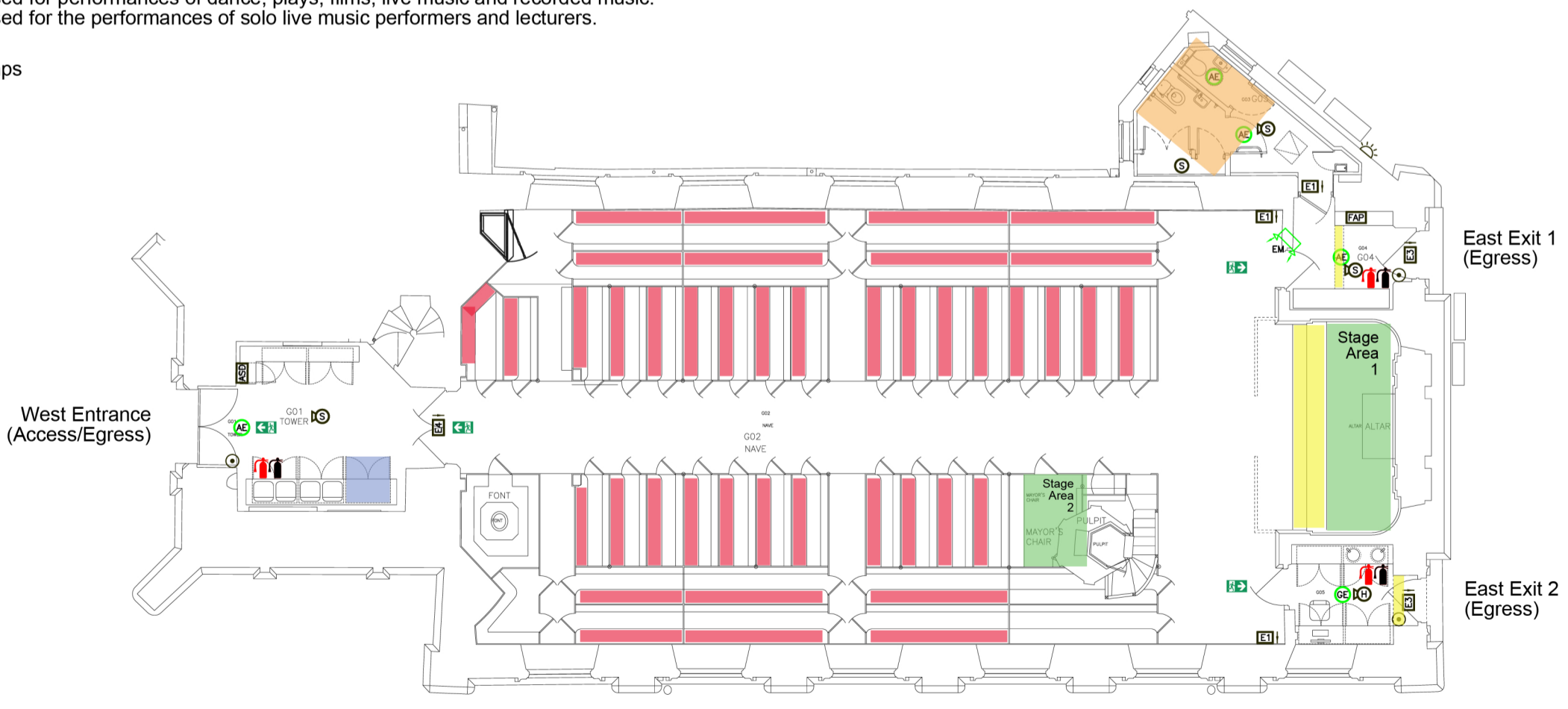
ISSUED FOR INFORMATION

LIGHTING LEGEND	
(A)	DECORATIVE CIRCULAR SURFACE FIXED FITTING
(B)	EXISTING LUMINAIRE RETAINED
(C)	1,500mm DECORATIVE LINEAR LED LUMINAIRE SURFACE FIXED
(D)	SURFACE FIXED IP RATED BULKHEAD
(E)	1,500mm IP44 RATED LINEAR LED LUMINAIRE SURFACE FIXED
(F)	SURFACE FIXED DECORATIVE BULKHEAD
(G)	RECESSED, 4000K LED, ANTI GLARE, JOINERY DOWNLIGHT
(H)	DENOTES LUMINAIRE C/W INTEGRAL EMERGENCY PACK 3 HR NON MAINTAINED
(I)	TWIN SPOT LUMINAIRE C/W INTEGRAL SELF CONTAINED 3 HR EMERGENCY PACK
(J)	SELF CONTAINED 3 HR EMERGENCY LUMINAIRE C/W DIRECTIONAL LEGEND PANEL
(K)	EXTERNAL SELF CONTAINED 3 HR EMERGENCY LUMINAIRE (WEATHERPROOF)
(L)	SELF CONTAINED DECORATIVE 3 HR EMERGENCY LUMINAIRE C/W DIRECTIONAL LEGEND PANEL
(M)	SELF CONTAINED DECORATIVE, SUSPENDED 3 HR EMERGENCY LUMINAIRE C/W DIRECTIONAL LEGEND PANEL

Licensing Act 2003 : Premises Plan : Legend

- The area which is used for the consumption of alcohol (Once a drink has been purchased, customers will consume alcohol within the pew seated areas)
- Bar Service Area
- Stage Area 1: Height 45cm - to be used for performances of dance, plays, films, live music and recorded music.  
Stage Area 2: Height 15cm - to be used for the performances of solo live music performers and lecturers.
- Location of steps:  
East Exit 1 & 2 will have mobility ramps
- Public Conveniences
- Emergency Exits
- Location of fire safety equipment:  
A03SP Water with (Additive)  
C02SP C02 Extinguisher

Please also see lighting legend and fire alarm legend on this plan.



FIRE ALARM LEGEND	
(FAP)	FIRE ALARM SYSTEM PANEL
(S)	SMOKE DETECTOR
(SDS)	SMOKE DETECTOR C/W SOUNDER
(ASP)	ASPIRATION SYSTEM CONTROL PANEL C/W SEPARATE INPUT/OUTPUT DEVICE & POWER SUPPLY UNIT
(ASD)	ASPIRATION DETECTION POINT
(M)	MANUAL BREAK GLASS CALL POINT
(S)	FIRE ALARM SOUNDER WITH XENON BEACON
(H)	HEAT DETECTOR C/W SOUNDER
(I/O)	FIRE ALARM INPUT/OUTPUT INTERFACE UNIT
(X)	XENON BEACON

REV	BY	DESCRIPTION	DATE
-	-	-	-/-/-

Client  
**THE CHURCHED CONSERVATION TRUST**

Project Title  
**ST SWITHUNS CHURCH WORCESTER**

Drawing Title  
**FIRE ALARM SYSTEM AND EMERGENCY LIGHTING LAYOUTS**

**LAM associates (UK) Limited**

BUILDING SERVICES DESIGN CONSULTING ENGINEERS  
Studio 1 & 2  
Highfields Farm Enterprise Centre  
Huncote Road, Stoney Stanton  
Leicestershire, LE9 4DJ  
tel: 01455 274466  
email: info@lamassociates.co.uk  
web: www.lamassociates.co.uk  
twitter: @lamassociatesuk

Drawn:	DRR 06/10/2021	Size:	A1
Checked:	DRR 06/10/2021	Scale:	1:100
Approved:	LAM 06/10/2021	Revision:	-
Drawing No.:	990648/E/C/03		

